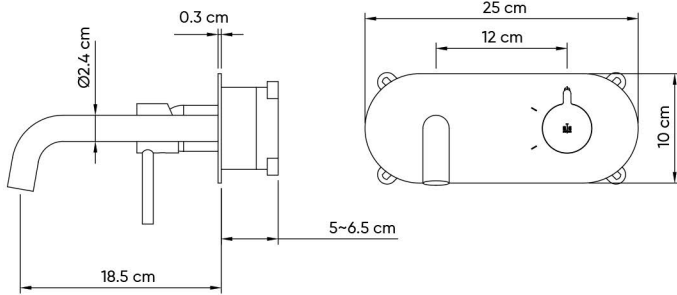


HATCH WASHBASIN MIXERS

Product Name: WASHBASIN WALL-MOUNTED MIXER
Model Number: HAT-MX095



AVAILABLE COLORS

GLOSSY CHROME
SW-60198711

MATTE BLACK
SW-60198712



BRUSHED NICKEL
SW-60198713

GLOSSY GOLD
SW-60198714

BRUSHED GOLD
SW-60198715

BLACK TITANIUM
SW-60198716

DESCRIPTIONS

Material: Brass main body Concealed Mixer, Brass Spout, Stainless steel (SUS 304) Plate
(BCC) Black chrome coating
 Shape: Round
 Packaging unit: 1 piece

TECHNICAL SPECIFICATION

Installation type: Wall-mounted
 Average Flow rate: 3.87 L/min
 Water consumption: Class A
 Spray type: Normal spray (Hot & Cold)
 Maximum operating pressure: 15 bar
 Connection type: G ½ in connections
 Spout length: 18.5 cm
 Ceramic cartridge: (Yes) 35 mm
 Temperature limitation adjustable
 With aerator, easy to clean
 With embodied box, easy to install

DIMENSIONS

25 x 23.3 x 10 CM

APPLICATIONS

Bathroom / Washroom

BOX COMPONENTS

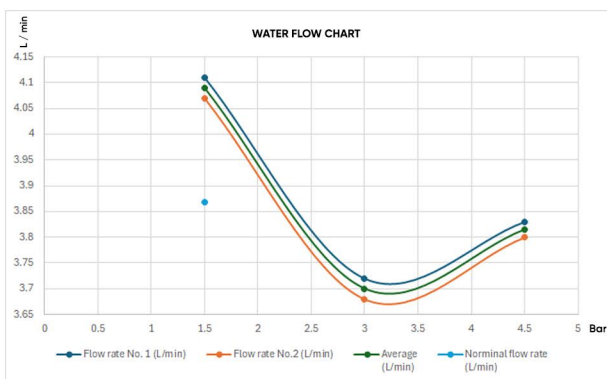
- Handle
- Spout
- Concealed Mixer with plastic (ABS) protection box
- Fischer wall plug set
- (SUS 304) Plate
- (SUS 304) Screws
- Aerator key
- Allen key
- Installation Manual

COUNTRY OF ORIGIN

Made in China for HATCH Sanitary

WARRANTY

7 years for concealed mixer
 2 years for mixer accessories, mechanical parts and surface



HATCH SANITARY

Hatch Sanitary is a trademark owned by MHG

Old Al Kharj Road, Building No. 3533
 Riyadh 14511 - 8305
 Kingdom of Saudi Arabia

© info.mhg@marketing-home.com

☎ 800 122 2230